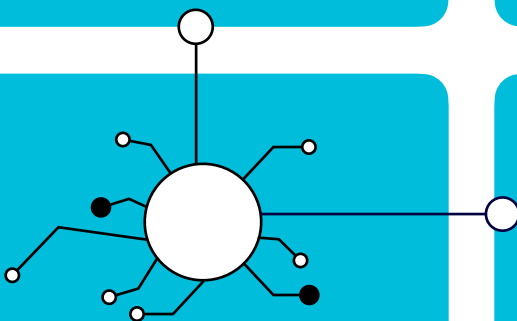


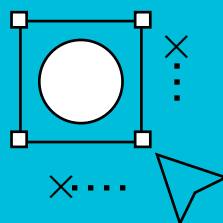
QUALIFIED HUMAN
RESOURCES



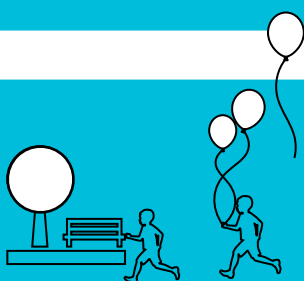
BOOMING IT&BPO
SECTOR



WELL DEVELOPED B2B
ECOSYSTEM



FASTEST GROWING
CITY



HIGH QUALITY
OF LIFE



GREAT PLACE FOR
R&D AND STARTUPS

PLOVDIV

TECHNOLOGY DESTINATION

2022/2023

TECHNOLOGY DESTINATION PLOVDIV

R&D, STARTUPS, OUTSOURCING

PUBLISHED BY PLOVDIV MUNICIPALITY

Bulgaria, 4000 Plovdiv,

1 Stefan Stambolov Sq.

+359 32 656 727

invest.plovdiv.bg

invest@plovdiv.bg

Copyright 2022 Plovdiv Municipality

WELCOME TO PLOVDIV



As the mayor of Plovdiv, I am proud to introduce the latest report on the technological industry in the second largest center for IT&BPO in Bulgaria.

ZDRAVKO DIMITROV
Mayor of Plovdiv

- ⋮ If this is the first source of information about the economy of the region that you come across, we strongly suggest looking at the Investment Destination Plovdiv 2022-2023 research
- ⋮ Plovdiv is home to 533 000 people who live less than 30 minutes away from the city center, 60% being aged 20-64. 24 000 expats have chosen to move to Plovdiv
- ⋮ Over 8000 people work in the 200+ IT and BPO companies in the city and as freelancers in the sector
- ⋮ Labor productivity in the sector increases with an average of 9.2% annually
- ⋮ The sector is one of the fastest growing and most important ones for the local economy
- ⋮ There are 28 vocational schools, around 10 500 students enrolled in STEM programs, and 9700 university students in technical studies

Table of contents

4

**INTERNATIONAL
RECOGNITION**

6

**HUMAN
CAPITAL**

8

**FUTURE
TALENTS**

10

**UNIVERSITY
EDUCATION**

12

**LABOR
COSTS**

14

**IT&BPO
ZOOM**

16

**MAJOR
COMPANIES**

20

**EMPLOYMENT
CONTRACTS**

22

**STARTING
A BUSINESS**

24

**R&D
ECOSYSTEM**

27

**OFFICE
SPACE**

28

**QUALITY
OF LIFE**

PLOVDIV AIRPORT



25 minutes from the Plovdiv city center



Regular passenger flights with Wizz Air and Ryanair to:

4 times a week:

LONDON STANSTED, UK: 3 h 20 min

Twice a week:

DORTMUND, GERMANY: 2 h 50 min

DUBLIN, IRELAND: 3h 55 min

LONDON LUTON, UK: 3 h 40 min

MEMMINGEN, GERMANY: 2 h 25 min

SOFIA INTERNATIONAL AIRPORT



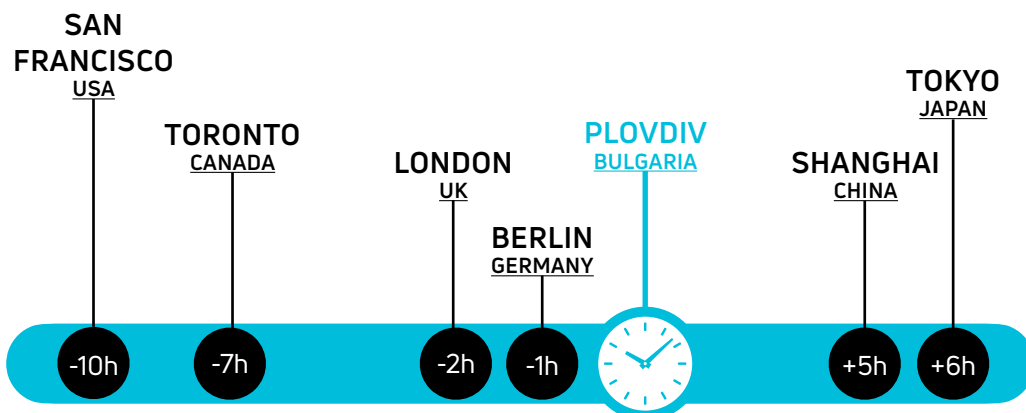
75 minutes from the Plovdiv city center



main Bulgarian airport with direct flights to over 90 destinations



TIME ZONE DIFFERENCE



International recognition

2nd

**MOST
INNOVATIVE
UPPER MIDDLE-
INCOME COUNTRY
IN THE WORLD**

Global Innovation Index,
Cornell, 2021

Bulgaria is shifting from customer support services **towards more knowledge-intensive activities**, such as financial consulting and reporting, R&D, technical and data analysis and interpretation

4th

**MOST MEDALS IN
INTERNATIONAL
MATHEMATICS
OLYMPIADS**

IMO

6th

**MOST MEDALS IN
INTERNATIONAL
PROGRAMMING
OLYMPIADS**

IOI

5th

**BEST
OFFSHORING
DESTINATION IN
EUROPE**

Global Services Location
Index, A.T. Kearney, 2021

Plovdiv offers great conditions for establishing product development companies, fintech and blockchain startups, global business service centers and financial outsourcing companies

1st

**SMART 50 international
award for the successful
digitalization of the local
education system**

Financial Times, fDi Intelligence, 2020

4th

**Best European city with
population under 350 000
inhabitants for its cost**

Financial Times, fDi Intelligence, 2022/23

Finalist

**Innovation in politics in the
education category**

The Innovation in Politics Institute,
2020

3rd

**Best fDi strategy among
European cities with
population under 350 000
inhabitants**

Financial Times, fDi Intelligence, 2022/23

Why Plovdiv?

**OVER 200 IT COMPANIES,
SHARED SERVICE CENTERS
AND TECH STARTUPS HAVE
CHOSEN PLOVDIV AS THEIR
INVESTMENT DESTINATION**

**LEADING UNIVERSITY
CENTER WITH 8
UNIVERSITIES AND OVER
37 500 STUDENTS**

**MORE THAN 8000 JOBS IN
THE BOOMING IT&BPO
SECTOR**

**A VIBRANT EXPAT
COMMUNITY IN THE DISTRICT,
THAT CONSISTS OF 24 000
FOREIGNERS**

**THE IT&BPO SECTOR MORE
THAN DOUBLED IN THE LAST
7 YEARS**

**DIRECT ACCESS TO A SINGLE
POINT OF CONTACT AND AN
ALL-IN SERVICE PACKAGE
FOR INVESTORS**

**A STRONG GROWTH
POTENTIAL OF ABOUT 5000
JOBS IN THE IT&BPO SECTOR**

**TIME PROXIMITY AND
CULTURAL SIMILARITIES
WITH TARGET MARKETS**

**18 500 HIGH SCHOOL
STUDENTS IN ADVANCED OR
INTERMEDIATE STUDY OF
FOREIGN LANGUAGES**

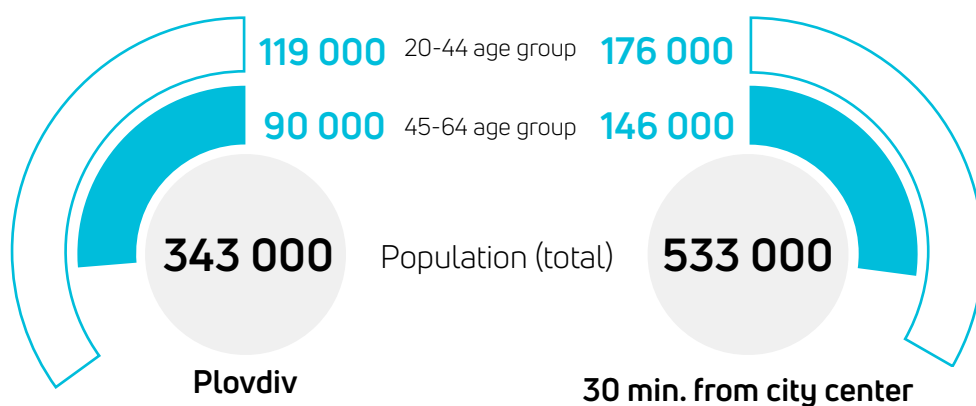
**EUROPEAN CAPITAL OF
CULTURE 2019 AND
EUROPEAN BEST CULTURAL
DESTINATION 2022, PLOVDIV
IS A GREAT PLACE TO LIVE,
STUDY AND WORK IN**

HUMAN CAPITAL

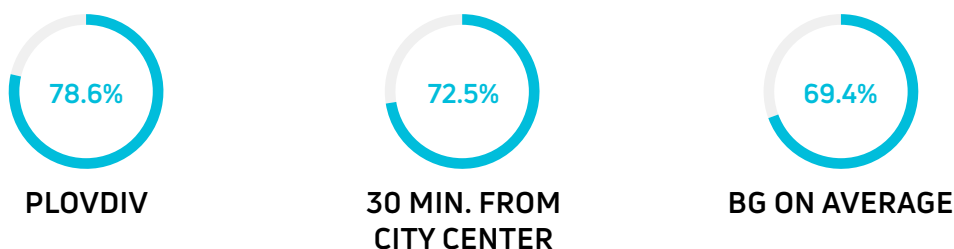
AN INTERNATIONAL CITY WITH A STEADILY GROWING POPULATION

- Plovdiv is the city with the **highest population growth in Bulgaria**, reaching over 343 000 citizens in 2021
- With its **well-developed road infrastructure and strategic location**, downtown Plovdiv is accessible in less than 30 minutes by a total of 533 000 people
- Plovdiv and its closest settlements are a **great source for young and educated specialists**. A total of 176 000 people, between the ages of 20 and 44, live in 30 minutes distance from downtown
- Plovdiv is an international city, characterized by its **openness to people from difference countries**, ethnic groups and cultures. The district has managed to attract and keep more than 24 000 foreign nationals
- High standard of living and a thriving local economy **constantly attract new citizens**. Both the city and the district are seeing a positive net migration - newcomers outnumber leavers
- Plovdiv is **particularly attractive for high-school and university students**, as well as for young professionals and families with kids, with high positive net migration rate in the 10-29 age group
- The number of expats and Bulgarians returning from abroad is growing steadily. Since 2017, Plovdiv district sees a **positive net migration vis-à-vis other countries**

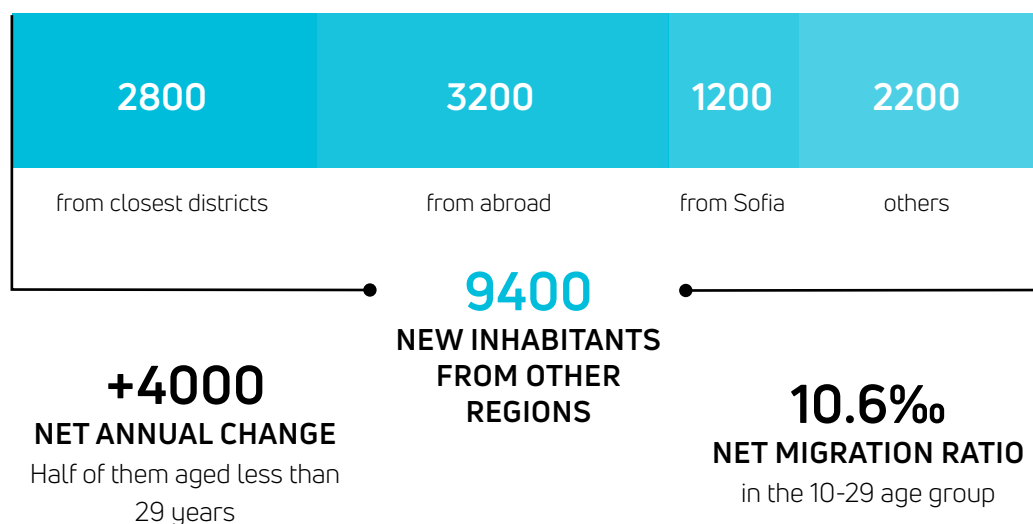
Large labor pool in wider Plovdiv region



High demographic replacement rate



Migration trends at district level



FUTURE TALENTS

MODERN SCHOOLS AND HIGH QUALITY EDUCATION

➤ Plovdiv has the highest level of penetration of cloud technologies in SEE. All municipal schools have integrated **G-suite for Education or MS Office 365** into the educational process

➤ During the academic 2022/23 year **over 100 classes will use the 1:1 technology** in the classroom, where every student has their own personal device

➤ There are **7 Google reference schools** in Plovdiv, as well as **360 Google certified teachers**

➤ Plovdiv is recognized as a **role model for its digitalization of the educational process** by numerous organizations, including Google and the Innovation in Politics Institute, and is also recipient of the Smart50 Award

➤ Plovdiv hosts one of the largest Montessori learning communities with **over 180 teachers and 1500 children**

➤ **10 500 students are enrolled in STEM** programs at district level, with 2/3 of them just in the city of Plovdiv

➤ **The first municipality in Europe to partner with Intel Corporation** on the implementation and development of Intel's STEM program "Skills for Innovation"

➤ Plovdiv Municipality actively **supports the dual education program**. 1000 students are enrolled in 54 dual education classes in the city

➤ **Over 14 700 students are in advanced or intermediate study of English language**, followed by 1900 in German, 900 in French, 500 in Spanish and 500 in Italian and other languages

High school network in Plovdiv district

18 500 Students in advanced or intermediate study of foreign languages

65 HIGH SCHOOLS, INCL. VOCATIONAL

7 FOREIGN LANGUAGE & MATH SCHOOLS

26 200 STUDENTS

3400 GRADUATES

4900
students

students with software engineering & math profiles

2800
students

with finance, accounting & business administration profiles

Source: Ministry of Education (data on district level for 2021/2022)

Leading schools in Plovdiv

High School	Major fields	Number of students
Language School „Plovdiv“	English, German	1300
Language School „Ivan Vazov“	English, Spanish, Italian, German, French	1200
Vocational High School of Electrotechnics and Electronics	Electrical Engineering, Software Engineering	1100
Math High School „Acad. Kiril Popov“	Mathematics, Software Engineering	1000
National High School of Commerce	Accounting, Banking, Business Management	900

Number of vocational training centers offering courses in:

47
Business & Marketing

31
Finance & Accounting

25
Electrical Engineering

17
Software Engineering

Source: NAVET, 2022

UNIVERSITY EDUCATION

QUALITY TRAINING FOR IT&BPO PROFESSIONALS

- Plovdiv is the leading university center in Southern Bulgaria. **8 universities** provide multidisciplinary talent pool of over **37 500 students**
- In the 2021/22 academic year, there were close to **14 000 students** enrolled in **IT&BPO** related fields at Plovdiv universities
- The thriving **IT&BPO sector collaborates with the local universities** to help them adjust the teaching programmes according to the market needs and prepare highly skilled professionals
- The city hosts **12 applied science institutes and labs**, working in close cooperation with the local universities
- Just in 2021 the local universities brought **over 7300 university graduates** to the labor market
- With its vibrant and creative atmosphere Plovdiv attracts talent from all over the country and abroad. More than **2700 people in the 20-29 age group** have moved towards Plovdiv in 2021
- The share of the population with completed tertiary education in Plovdiv and the whole South-Central region is **higher than that in other European outsourcing regions**, like those around Debrecen in Hungary and Cluj-Napoca in Romania
- Plovdiv actively **supports the practice of lifelong learning** and is the only Bulgarian city in the UNESCO global network of learning cities

8
UNIVERSITIES

37 500
STUDENTS

13 800 students in
IT&BPO related
fields for 2021/2022

3200
FOREIGN STUDENTS

7300
GRADUATES

Business & Marketing	Software Engineering	Electrical Engineering	Language Studies	Finance & Accounting	Legal Studies	Maths & Physics
5470	1860	1850	1760	1670	880	310

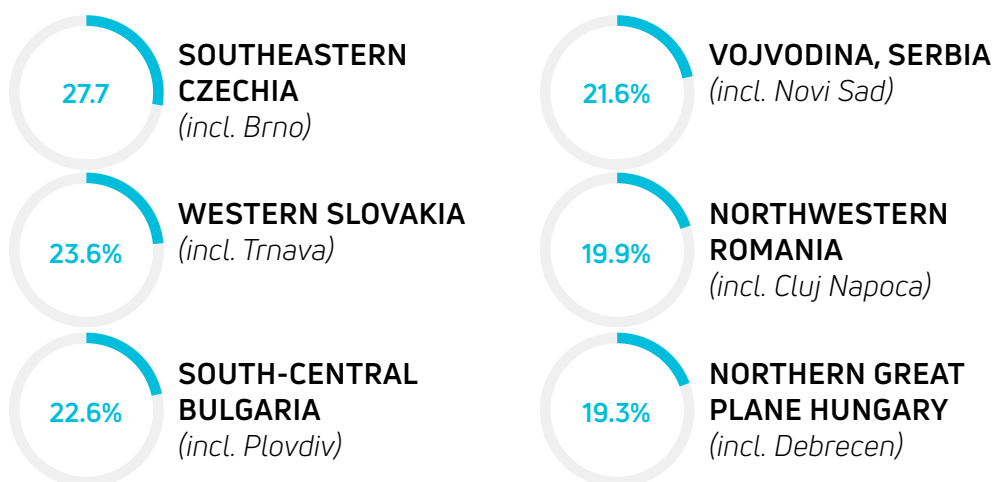
Source: Plovdiv universities (data for 2021/2022), NSI

Population aged 25-64 with university degree



Source: NSI, 2020

Population aged 25-64 with university degree in selected outsourcing regions



Source: Eurostat, 2021

LABOR COSTS

WELL-TRAINED LABOR FORCE AT COMPETITIVE PRICES

- Plovdiv offers **qualified labor force for over 200 IT&BPO companies**, that have chosen Plovdiv as their investment destination
- Bulgarian ICT labor is cost effective by international standards. Labor costs in the sector in 2021 are still the lowest in the EU, being with **37% lower than those in Czechia and Slovakia**, as well as 24% lower than those in Poland
- The IT&BPO sector offers **attractive wages for local talent and high-skilled workers** from other regions. Hiring labor for the outsourcing sector imposes more than 2.5 times higher labor costs than the average for the rest of the business services in the region
- **Labor costs in Plovdiv in IT&BPO grow with 11.8% annually** on average for the past 7 years, accompanied by a steady growth of labor productivity
- Despite a high wage growth rate, wages in absolute terms in the sector are with close to **16% lower than the average for IT&BPO** in the rest of the country and especially in the capital Sofia
- Many of the companies operating here **offer training and career development** to employees in the early stages of their higher education, whose wages are below the indicated average

Gross wages in IT&BPO in Plovdiv, €/month

IT COMPANIES	Min	Max	SHARED-SERVICES CENTERS	Min	Max
DevOps			Reporting		
• Junior Level	1200	2300	• Junior Level	800	1600
• Experienced	2300	6000	• Experienced	1200	2100
Full Stack			Payroll Specialists		
• Junior Level	1300	2300	• Junior Level	1000	1300
• Experienced	2300	6000	• Experienced	1300	1800
Back-End			General Ledger Accountants		
• Junior Level	1000	2300	• Junior Level	900	1200
• Experienced	2300	6000	• Experienced	1200	1500
Front-End			Accounts Payable/Receivable		
• Junior Level	900	2100	• Junior Level	800	1100
• Experienced	2300	5500	• Experienced	1200	1300
QA			Customer Support Representatives		
• Junior Level	900	1900	• Junior Level	800	1000
• Experienced	2100	4200	• Experienced	1200	1500
Technical Support			Sales Specialists		
• Junior Level	900	1300	• Junior Level	1000	1200
• Experienced	1200	2700	• Experienced	1400	1500

For wages up to €1740 total labor cost includes gross wage plus **18.9%** mandatory social security contributions paid by employer.

For wages over €1740 total labor cost includes gross wage plus **lump sum €329**

IT&BPO ZOOM

A PLACE TO SCALE FOR INNOVATIVE COMPANIES

With **more than 8000 employees** in IT companies, tech startups, customer support centers and shared service centers, Plovdiv has established itself as the largest IT&BPO cluster in the country, next only to the capital Sofia

Modern business services have been enjoying **rapid expansion over the past few years**, as Plovdiv has become an IT&BPO centre preferred by domestic and foreign investors alike

With a considerable annual average growth in value added of 21.4% for the past 7 years, the IT&BPO sector in Plovdiv has **more than doubled its share in the total value added** in the local economy

With its universities, large number of students, R&D capacities and infrastructure, Plovdiv has gradually **developed into a real knowledge economy**, that attracts innovative IT companies and startups

Due to its success in attracting investors, the city was **ranked by Financial Times 3rd best European city** with a population under 350 000 inhabitants in 2022 for its FDI strategy

The 7 hour time difference from Toronto and New York and the 6 hour time difference from Tokyo enable outsourcing companies to **provide services to the East and West simultaneously**

IT&BPO in Plovdiv: A strong growth story

SALES REVENUES

**+21.1%**

VALUE ADDED

**+21.4%**

PRODUCTIVITY

**+9.2%**

EMPLOYMENT

**+11.6%**

Average annual change for 2014-2021

Source: TEZ with NSI and Commercial register data

HR & RECRUITMENT COMPANIES

Adecco Bulgaria

adeccobulgaria.com

Easy Consult

easyconsult.eu

HRS Bulgaria

hrs-bg.com

Success stories

iOiO.tv is a developer of a cloud-based automation platform designed for enterprise video creation and collaboration. The company's platform empowers users to create their own TV channels and Livestream.

Sibiz provides ASIC, FPGA, Firmware design and IP development services. The company offers processor cores, caches, memory and DRAM controllers, etc. and related firmware and software development toolchains.

Novarto is a software consulting company with proven expertise in providing businesses with solutions for customer relationship management and e-commerce, using the products of SAP.

Vereign Labs is a RegTech Swiss-born startup with predominantly Bulgarian team that develops authenticity suite for email, identity and contacts. Key innovation is the easy management by users of cryptographic keys.

Prime Holding is a product innovation company with more than 1000 successfully completed projects for clients on all continents, that excels at developing disruptive digital experiences.

VSG Bulgaria is a fintech company working in the field of loan origination systems. The company is a trusted partner of some of the biggest financial institutions in USA.

Major companies

IT Companies

Many international and fast-growing Bulgarian IT companies are present in Plovdiv. The **number of product-based companies is rapidly increasing** and the portfolio of their activities is becoming more complex and advanced.

Customer Relationship Management

The **good knowledge of foreign languages** attracts many companies, servicing predominantly foreign markets. The talent pool consists of 18 500 high school students in advanced or intermediate study of foreign languages. A good source of native speakers is the expat community of 24 000 foreigners from 130 countries.

Global Business Services

The sector is evolving from handling mainly transactional processes towards more complex operations, with higher value added and **greater focus on quality of the provided services**.

KPO

Plovdiv sees its future in high value-added projects and investments, especially in **R&D and knowledge-intensive work**, that engages highly skilled professionals. Plovdiv Municipality, in close cooperation with the private sector and educational and science institutions, is creating a suitable environment for the creation of Centers of Excellence.

Financial Outsourcing

The local ecosystem also provides opportunities for outsourcing financial data analytics and forecasting, accounting audit, tax accounting, bookkeeping, reporting and compliance. **A highly developed school and university network** provides fresh talent pool of more than 2800 high school students and 7100 university students, that study finance, accounting, business administration & marketing.

Smart Factory & Industry 4.0 Solutions

With 15% of all manufacturing jobs in Bulgaria and many high-tech mechatronics & automotive companies, Plovdiv has a significant potential for process innovations and **implementation of the latest Industry 4.0 solutions**.

60K	BDC Bulgaria	Data+	Effortel
A Data Pro	BGO Software	Daylight Project Solutions	Eksivat Technologies
Accenture Bulgaria	BPO Bulgaria	Delasport	Elders
Adastra Bulgaria	Broadcom Bulgaria	Delta Group - 2012	Endava
Adecco Bulgaria	Brosix	Delta Source	Enigma Software Group
Admin Corporation	Business Inside	Design Connected	Enter CRM
Advance	Cloudtech	Devcloud	Enterprise Security Solutions
Advise Tech	Coda Consult	Devhost	Euroweb (Viscomp)
Altscale Bulgaria	Code Coda	DiaDraw	EVN Service Center
Amexis	Code Nest	Dgistore24	Evolink
App Factory	ConsultCommerce	DIGITALL	Excuse
Arcade Retail	CoreTech Bulgaria	Dilago	FFW
Arivasoft	CRA Services	Donatix	Football Radar Bulgaria
Arkieva	Cream BG	DraftKings (SBTech)	For Creations
Ascent Services	Cryptosphere Systems	dWare	Gamaflow
Banksoft	Data Network International	eDynamix	Gec BG

Got It	Ioio.Tv	MentorMate Bulgaria	Podix
GPS Systems Bulgaria	IT Akademia	Modis Bulgaria	Prime Holding (Programista)
Graystone Capital	IT Factory	Move Digital	Proxiad Bulgaria
Haycad Infotech	ITC Consult	Niset	Quality House
Heisenberg Online Marketing	JT Soft	Nitro Bite	Real Time Games Development
Hemisphere Commerce	Kodar	Novarto	Repulse
Hosting Solutions	Konversa	Orak Engineering	Retail Direct
Hosting Well Done	LA Bite - Bulgaria	ORM	Revauxy
Hype Purified	Language Bear	Outcons	Reward Gateway (UK) - Bulgaria Branch
IBS Bulgaria	Laptop Media	Oworkers	Risco Group
ICYGEN	Lead Consult	Page Rules	RUBBER DUCK
IKOM	Limacon Marketing	Paraflow	Saga Tek
Ilievsoft	M+w MediaNetworks	Pasha Trading Consultancy	Scale Focus
Infinite Lambda	Marketing Pragmatic	Pastel Studios	Sciant
Intech Group	Media IT Services Bulgaria	Pentagon Interactive	Seeburger Informatik
InterConsult Bulgaria	Membyte	Plutus BG	SelMatic

Serpact	Speed	Think Tank BH	VPA
SFB (Speedflow)	SQA Service	TIMIFY	VSG Bulgaria
Sibiz Bulgaria	SSMN	Totemo Solutions	Web Dreams Group
Signalitika	Staello	Triera Soft	Web Interactive
Simvolvy Applications	Strypes	TSD Services	Web X Software
Sirma Business Consulting	Sutherland Global Services Bulgaria	TTEC Eastern Europe	Websa
SIS Technology	Swimcloud	Ulpia Tech	Wecraft Media
SiteGround Hosting	Synergy Global Financial Solutions	Unicons	Westernacher Consulting
Smart Tech Systems	T D Consulting	UNIQA Software - Service Bulgaria	Wisdom
SmartIT	TechnoLogica	Vato Soft	Wogi
Smule	Technology Solutions 2018	Vereign Labs	Wool Premium
Social Cloud	Tedisoft	Vertinity	WOW Corporation
Social Ecommerce Bulgaria	Telelink City	Viking Lifesaving Equipment GBS	You Plus We
Social Freaks	Telus International	Vision Print	Zebrinex
Soft to Run	Tendrik (Seomax)	Visrez	Zingasoft
Softart BG	Terminep Bulgaria	VKA Solutions	etc.

EMPLOYMENT CONTRACTS

LABOR LAW BASED ON PRINCIPLES APPLICABLE THROUGHOUT THE EU

- The employment relationships of **foreign nationals working in the country** are regulated by the Bulgarian Labor Code, insofar as not provided otherwise in a law or a treaty to which Bulgaria is a party
- **Integral part of the Bulgarian legislation** are all labor related legal acts of the European Union. In case of conflict between any internal law and the EU law, Bulgarian courts are obliged to apply directly the provisions of the latter
- Places of work outside of the enterprise (**e.g. work from home**) as well all special working conditions in connection with the special place of work are to be determined in the labor contract, whereby the imperative provisions of the Labor Code are to be adhered to
- **EU citizens can obtain long-term residence permit** in less than 24 hours. They do not need a visa to stay and work in Bulgaria
- Highly qualified workers from non-EU countries can apply for the EU Blue Card that allows them to live and work in the European Union. **Blue card holders can request family reunification** with permits for the same duration as the EU Blue Card
- The Bulgarian labor law is based on some general principles such as freedom and protection of labor, fixed working hours, guaranteed rests and leaves, equal pay between men and women, limitation on overtime work, etc.

Types of Contract

- Indefinite period of time
- Limited period of time

Regular Working Hours

- 8 hours per day
- 40 hours per week

Night Work

- Work performed between 10.00 p.m. and 6.00 a.m.
- 7 hours per night
- 35 hours per week

Rests

- 30 minutes minimum lunch break
- 12 hours daily rest

Paid Leave

- Minimum of 20 work days per calendar year
- 4 months minimum employment service as a condition for claiming a paid annual leave

Unpaid Leave

- Up to 30 days unpaid leave per one calendar year is recognized as a period of service

Trial Period

- 6 months maximum trial period can be stipulated in the employment contract

Maternity Leave

- 410 days, 45 of which are used before the birth

Notice Period

- 30 days for an indefinite period employment contract
- 3 months for a fixed term employment contract

Source: Bulgarian Labor Code

PERKS & BENEFITS PROVIDED BY COMPANIES IN PLOVDIV

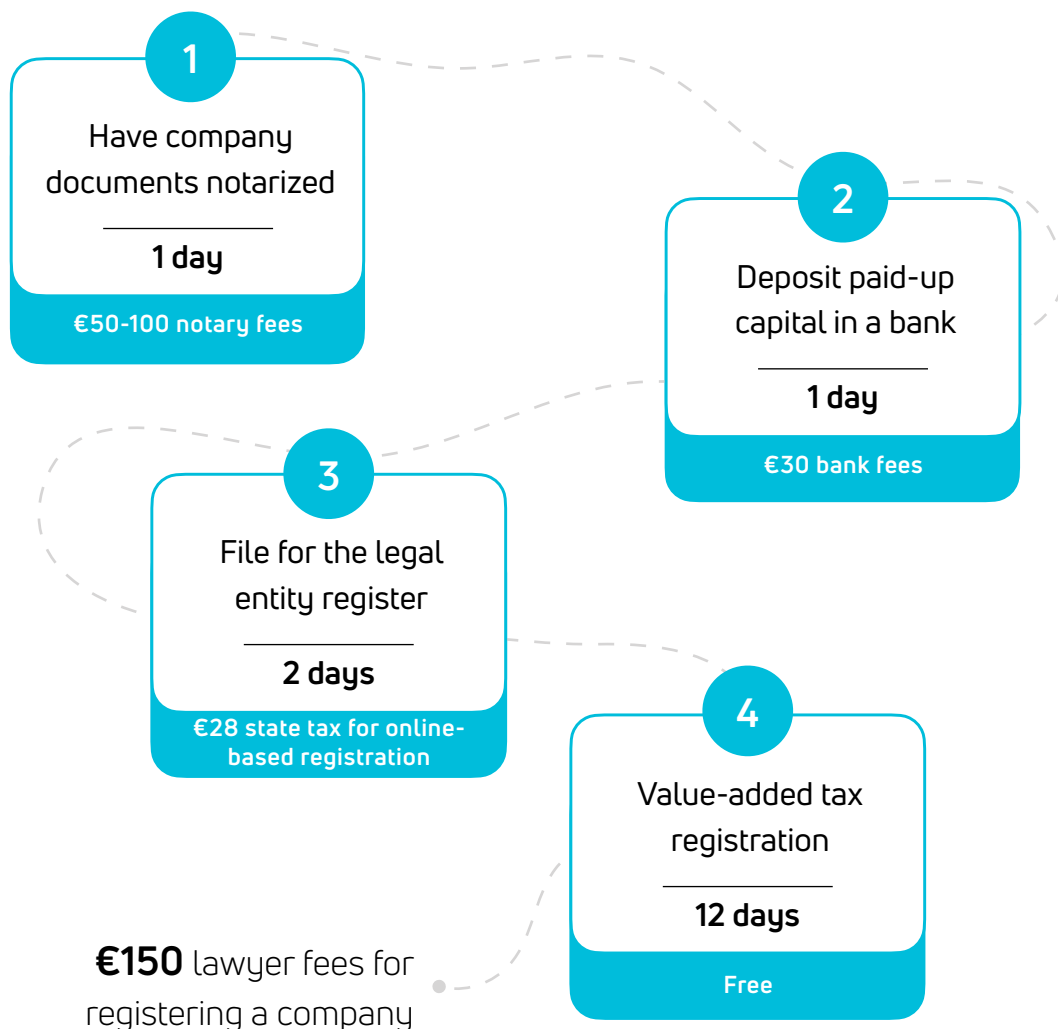
- Work From Home Opportunities
- Flexible Working Time
- Training Programs
- Additional Healthcare/Pension Fund
- Discount Vouchers
- Sport Cards
- Employee Referral Programs
- Relax Zones
- Team Activities

STARTING A BUSINESS

THE PROVISIONS OF BULGARIAN LAW
APPLY TO FOREIGN INDIVIDUALS AND LEGAL
ENTITIES

- ~ All types of commercial companies and branches are established by way of **registration in the Commercial Register** administered by the Registry Agency with the Ministry of Justice
- ~ A limited liability company (LLC) is the most common legal form for investors conducting business in Bulgaria. Its biggest advantages are the **limited liability of the shareholders**, low cost of incorporation, simple governance structure and minimum capital requirement of €1
- ~ Joint-stock (JSC) companies have a **minimum capital requirement of €25 565**. JSC shares are tradable instruments, that are evidenced by interim share certificates/printed shares issued by the JSC
- ~ The shareholders' exposure in LLCs and JSCs is **capped at the amount of their shareholding** in the company's capital
- ~ Foreign investors can establish a **100% foreign owned LLC or JSC**
- ~ Branches and trade representative offices may be registered in Bulgaria by foreign investors. They are **not considered separate legal entities** and don't have capital requirements
- ~ Investors benefit from a **single point of contact in Plovdiv Municipality** & an all-in service package, including preliminary researches and consultations, staff recruitment support, local media promotion, etc.

Workflow of registering a company



SIMPLE TAX SYSTEM OF FLAT RATES:

10% Personal income

10% Corporate tax

20% VAT

Dividends distributed by Bulgarian companies to legal entities resident in EU or EEA are not subject to withholding tax. In the rest of the cases, a 5% withholding tax on dividends is due

R&D ECOSYSTEM

IDEAL CONDITIONS FOR APPLIED RESEARCH AND INDUSTRY-ACADEMIC PARTNERSHIPS

- Plovdiv has a well-developed network of modern research centers, laboratories and science institutes in **mechatronics, food-tech, and biotech** among others
- The varied infrastructure available in the city facilitates the **creation of innovative products and services**, alongside enabling the conduction of research projects
- Plovdiv provides all the necessary prerequisites for the development of R&D centers and Centers of Expertise. **A large pool of high-skilled professionals** with great knowledge of the industry is available at a reasonable cost
- The number of **R&D employees in local companies more than tripled** during the past 7 years
- The progress made in the **development of the local R&D system** is the result of joint efforts by the local high-tech industry, Plovdiv Municipality, Bulgarian Academy of Sciences and Plovdiv universities
- The Center of Plant Systems Biology and Biotechnology Plantasyst conducts **cutting-edge basic and applied research** for unravelling the intricate gene regulatory networks and metabolite pathways governing plant development, stress physiology, and production of valuable metabolites with potential market applications

Name	Activities	Website
Center of PlantaSYST Biology & Biotechnology	Molecular Biology, Functional Genomics, Metabolomics, Bioinformatics, Plant Genetics	plantasyst.eu
Central Laboratory of Applied Physics & Research Center in Mechatronics and Nanotechnologies	Nanostructured and Nanosized Coatings and Thin Layers, Semiconductor Materials and Structures, Energy-Saving and Ecological LED Systems	clap-bas.com
Fruit Growing Institute	In Vitro Propagation of Planting Material, Chemical And Technological Research	fruitgrowinginstitute.com
Center of Competence "Smart Mechatronics, Eco- and Energy Saving Systems and Technologies"	Intelligent Mechatronic Systems and Technologies, Energy Saving and Clean Technologies	tu-plovdiv.bg
Center of Competence "Personalized Innovative Medicine"	Molecular Genetic Analysis; Drug Delivery Systems	mu-plovdiv.bg
Center of Technologies at Plovdiv University "Paisii Hilendarski"	Bioengineering Technologies; Sustainable Bioeconomy/Biobusiness Growth	pu-technocentre.eu
Institute of Fisheries and Aquaculture	Scientific and Research Activities in the Field of Aquacultures	ira-plovdiv.bg
Institute of Robotics - Plovdiv Branch	Industrial and Service Robotics; 3D Design and Printing, Sensors, Hall Elements	ir.bas.bg
Laboratory of Bioactive Substances	Isolation, Purification, Structure Modification of Polysaccharides, Food Chemistry	orgchm.bas.bg
Laboratory Complex for Chemical And Instrumental Analysis	Analysis of Water, Soil, Seeds, Fruits and Vegetable	au-plovdiv.bg
National Institute of Meteorology and Hydrology - Branch Plovdiv	Full Monitoring of the Meteorological and Agrometeorological Elements	plovdiv.meteo.bg
Food Research and Technology Transfer Center	Food & Beverages Analysis and Testing, Machinery Evaluation	uft-plovdiv.bg

EDUCATION & INDUSTRY BOARD



Bauersachs Foundation



INDUSTRY PARTNERS
IN THE 2022/2023
PROGRAM FOR
CAREER
ORIENTATION &
MOTIVATION OF
PRIMARY SCHOOL
CHILDREN

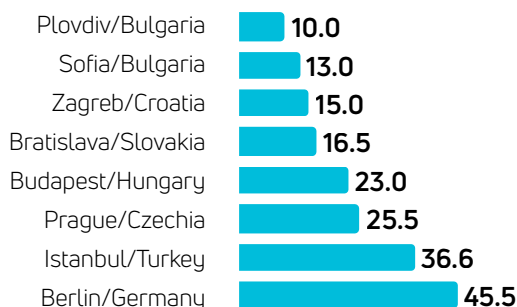
Join the board
in 2022/2023:
ei-board.org

One Passion.
Many Opportunities.
LIEBHERR



Modern office spaces at affordable prices

Rent of prime office space



9-12 €/m²
MONTHLY RENT
FOR OFFICE CLASS A

4-6 €/m²
MONTHLY RENT
FOR OFFICE CLASS B

Source: TEZ, Colliers, 2022

The IT&BPO sector is one of the key driving forces behind the development of the real estate market

MAJOR OFFICE CENTERS

Business Centre Angelov
businesscentreangelov.com

Capital City Center
capitalcitycenter.bg

Capital Trade Center
capitaltradecenter.bg

Kamenitza Office Park
kamenitzapark.bg

Office Park Plovdiv
officeparkplovdiv.com

PIMK Office Center
pimkbuild.bg

Plovdiv Plaza
plovdivplaza.bg

Regus
regus.bg

Rilon Center
rilon-center.business.site

Royal City Business Park
galaxy-bg.com

MAJOR CO-WORKING PLACES

Cat & Mouse Coworking
catandmouse.bg

Colorking
colorking.com

Ji4ka
ji4ka.com

Networking Premium
networking.space

Regus
regus.bg

454 000 m² approved for non-housing construction in 2021
(incl. office spaces, industrial spaces, hotels and retail spaces)

Source: NSI (data on district level)

A world of possibilities for both indoors and outdoors recreational activities

82	STADIUMS & SPORTS FACILITIES	€7.70	Lunch menu
52 km	BIKE LANES	€0.51	Public transport (one-way ticket)
2200 m	REGATTA VENUE	€25.61	Public transport (monthly pass)
300	SUNNY DAYS	€3.28	Taxi journey of 5 km (3 miles)
76	PARKS & GARDENS	€3.00	E-scooter (15 min. ride)
2190 acres	PUBLIC GREEN SPACES	€30.20	E-car (per day)
96	KINDERGARTENS & NURSERIES	€1.00	Parking in city center (per hour)
49	SCHOOLS PROVIDING PRIMARY EDUCATION	€23.10	Gym membership (monthly fee)
700+	CULTURAL SIGHTS	€7.50	Cinema ticket
50+	MUSEUMS AND GALLERIES	€265.30	Private kindergarten (per month)
3	OPEN AIR THEATRES	€290	1-bedroom apartment in city center (rent perm month)
6	CINEMAS	€ 80.20	Average basic utilities
16	4* & 5* HOTELS		

Source: Plovdiv Municipality

Source: Numbeo, 2021



BISHOP'S BASILICA OF PHILIPPOLIS

www.plovdivmosaics.org



The Bishop's Basilica of Philippopolis is the newest tourist site of Plovdiv. It was opened for visitors on April 18th, 2021. ***The Bishop's Basilica and Late-Antique Mosaics of Philippopolis, Roman Province of Thrace*** is included in UNESCO's Tentative List of Republic of Bulgaria.

CREATING A BUSINESS-FRIENDLY CITY



PLOVDIV MUNICIPALITY

Bulgaria, 4000 Plovdiv,

1 Stefan Stambolov Sq.

+359 32 656 727

invest.plovdiv.bg

invest@plovdiv.bg

In partnership with

